



CONCRETE WASHOUT CONTAINERS

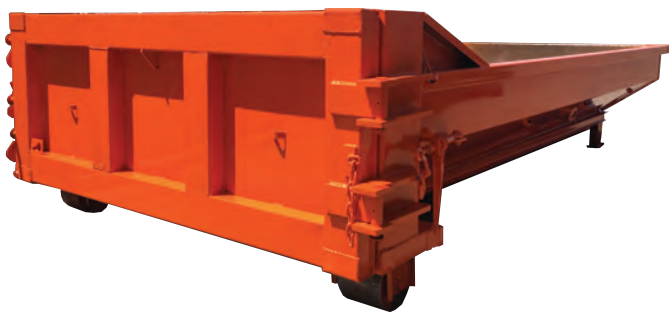


www.hambickitrucks.com

1-800-552-2648

Concrete Washout Containers

Standard Specifications: 16' Long x 8' Wide x 2' High



- 10 Gauge Floor Reinforced by 3" Structural Channels on 18" Centers
- 10 Gauge Side Walls Reinforced by 4" x 4" x 3/16" Tubing Top Rails
- Designed for Standard Roll-Off Hoists Utilizing Two Longitudinal Guide Rails (6" x 2" x 3/16" Tubing)
- Single Sealed Rear Door Has Heavy -Duty Hinges with Zerk Fittings Designed to Carry Door Weight
- Heavy-Duty Locking Hooks for Keeping Doors Locked During Loading
- Rachets and Turnbuckles Keep the Rear Door Tight Against the Container, Preventing Leaks.
- Reinforced Corners
- Heavy-Duty 8" x 8" Rear Ground Rollers, Pads in the Front Keep the Container Level.
- Nose Cone Rollers with Zerk Fittings
- Exterior Painted Your Choice of Color, Interior Primered

Nestable Concrete Washout Pan



Optional Accessories

- Heavy-Duty Water Tight Lid

Hambicki' washout pans are made water-tight for the proper containment of harmful concrete material.

Standard Specifications

- 7 Gauge Steel
- 2 Full-Length Steel Pockets and Gussetts Made of 1/4" Steel
- Top Rail Tubing is 4" x 4" x 3/16" Thick
- Lift Eye Hooks are 1" Thick Steel
- Inside Gussetts are 7 Gauge Steel
- 10 Gauge Steel Bumpers
- Painted Customer Color
- Made Any Size



Hambicki's Truck & Container Sales Inc.

2630 W. Broadway Rd. · Phoenix, Arizona 85041

Toll Free: 1-800-552-2648 :: Local: 602-268-8708 :: Fax: 602-276-4552

